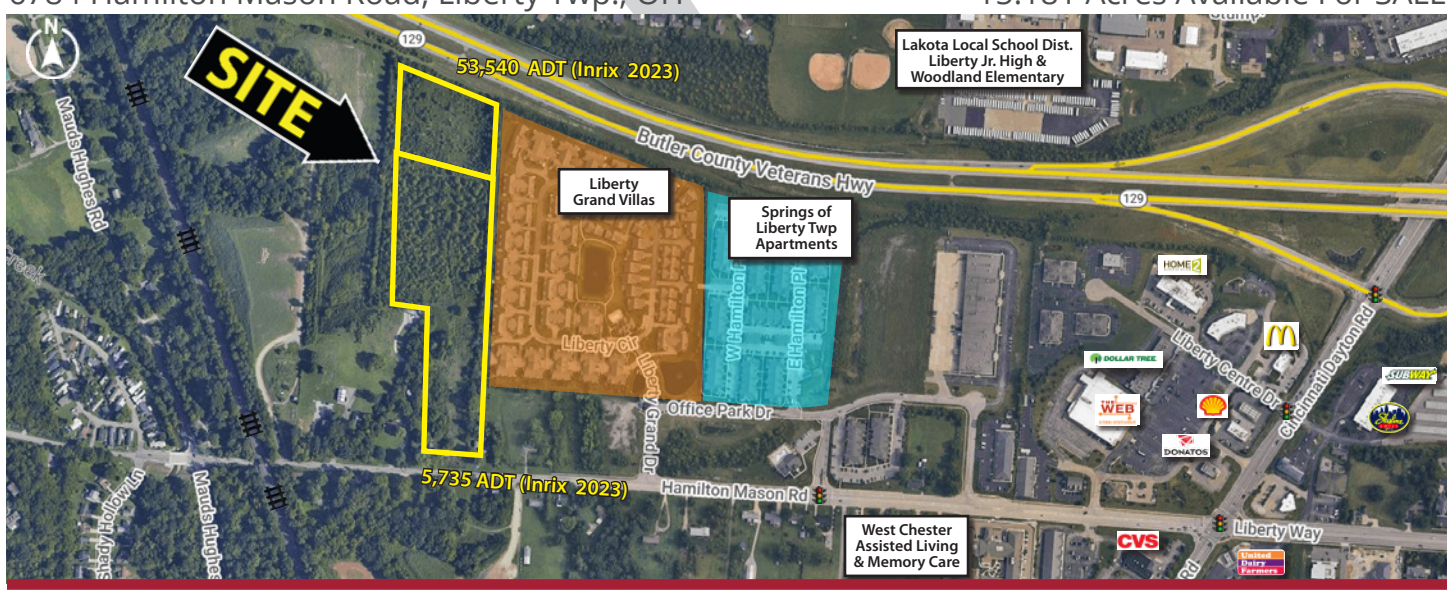




## LIBERTY TWP. LAND

6784 Hamilton Mason Road, Liberty Twp., OH

15.181 Acres Available For SALE



### Property Details:

- Large residential land site available in fast-growing Liberty Township
- Located in highly-regarded Lakota School District (rated #1 in Butler County by Niche)
- Easy access to Cincinnati, Dayton, and Hamilton via Interstate 75 and State Route 129
- Numerous hospitals and retail shopping centers within 10 minute drive

Major retail area anchors include:



### Demographics:

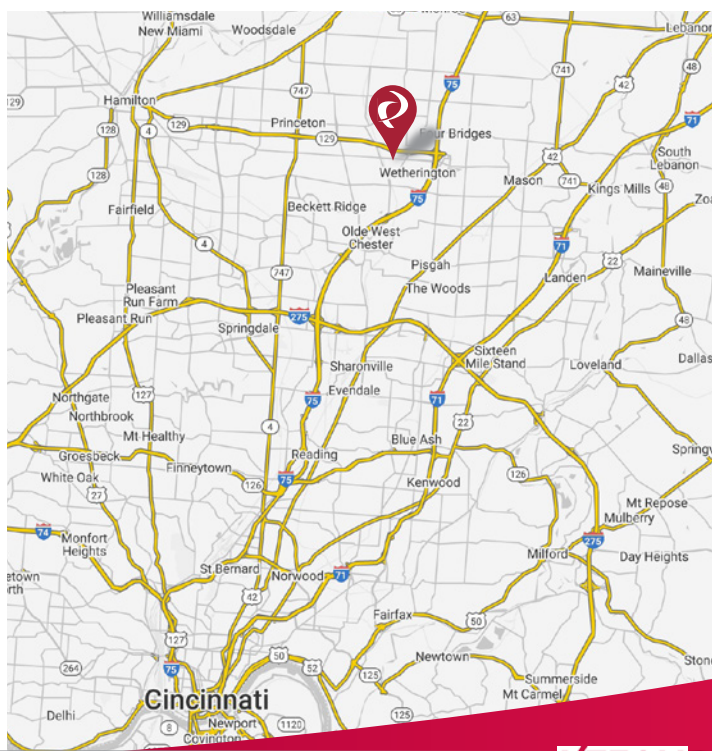
2023 Estimates	1 Mile	3 Mile	5 Mile
Population	8,462	52,913	145,953
Households	2,860	18,493	50,988
Average Household Income	\$156,384	\$174,199	\$167,113
Total Number of Employees	1,209	17,677	54,238

### Traffic Counts:

Inrix 2023	ADT
Hamilton Mason Road	5,735
US 29	53,540

### Contact: Zachary Schunn

513.489.3343 x5  
zschunn@edgegp.com



LET US GIVE YOU AN EDGE



128 East Second Street | Suite B | Covington, KY 41011 | 513.489.3343 | edgegp.com

Information and any imagery is proprietary to Edge Real Estate Group and confidential. Information contained herein has been obtained from sources deemed reliable, but is not guaranteed and is subject to change.



# LIBERTY TWP. LAND

6784 Hamilton Mason Road, Liberty Twp., OH

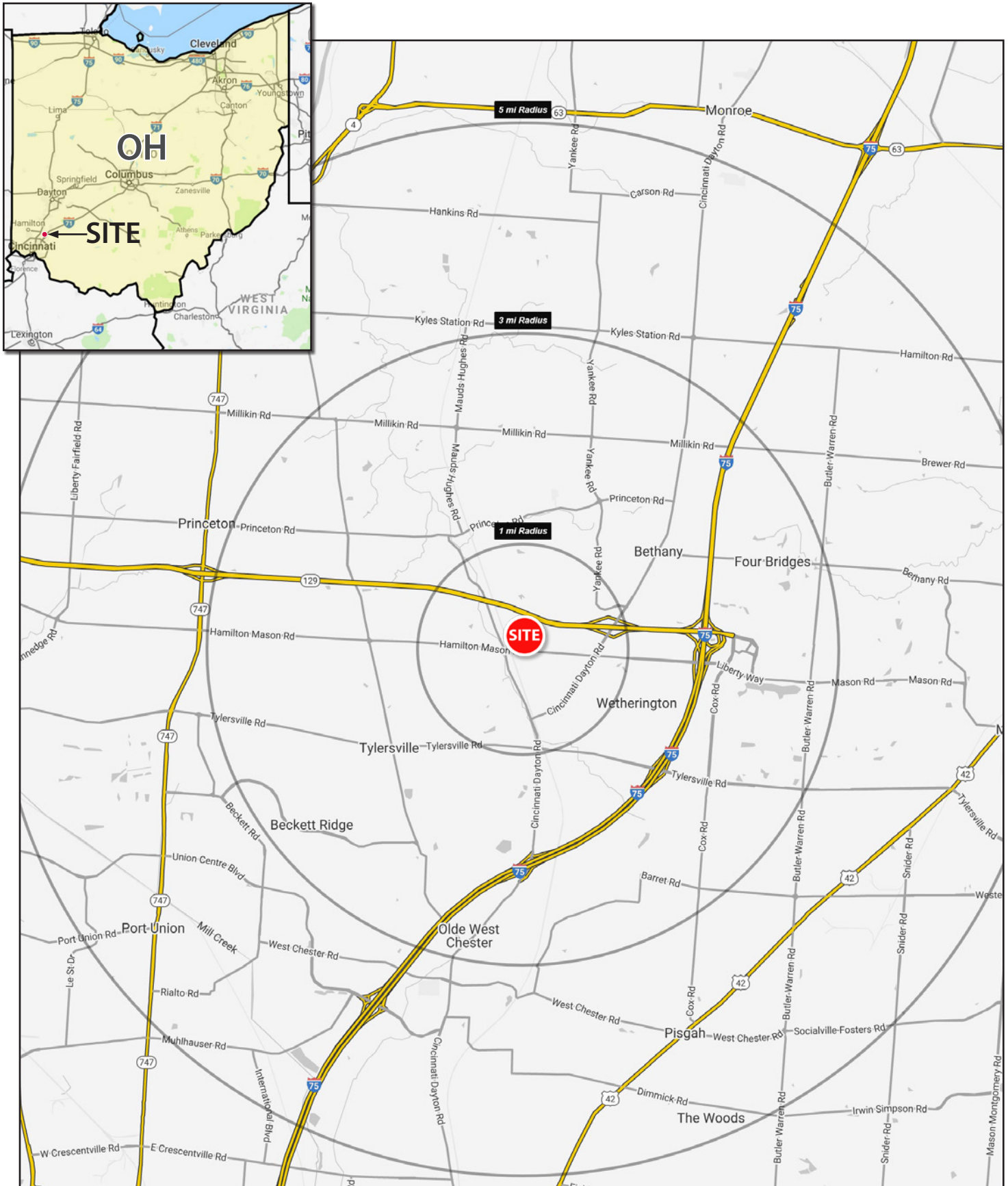


128 East Second Street | Suite B | Covington, KY 41011 | 513.489.3343 | edgegp.com



# LIBERTY TWP. LAND

6784 Hamilton Mason Road, Liberty Twp., OH



128 East Second Street | Suite B | Covington, KY 41011 | 513.489.3343 | edgegp.com

Information and any imagery is proprietary to Edge Real Estate Group and confidential. Information contained herein has been obtained from sources deemed reliable, but is not guaranteed and is subject to change.

# LIBERTY TWP. LAND

6784 Hamilton Mason Road, Liberty Twp., OH

## Summary Profile

2010-2020 Census, 2023 Estimates with 2028 Projections  
 Calculated using Weighted Block Centroid from Block Groups



Lat/Lon: 39.371/-84.3975

6784 Hamilton Mason Rd OH 45069	1 mi radius	3 mi radius	5 mi radius
<b>Population</b>			
2023 Estimated Population	8,462	52,913	145,953
2028 Projected Population	8,596	54,302	149,008
2020 Census Population	8,494	53,040	145,440
2010 Census Population	7,225	49,507	129,811
Projected Annual Growth 2023 to 2028	0.3%	0.5%	0.4%
Historical Annual Growth 2010 to 2023	1.3%	0.5%	1.0%
2023 Median Age	35.1	37.7	37.5
<b>Households</b>			
2023 Estimated Households	2,860	18,493	50,988
2028 Projected Households	2,932	19,106	52,599
2020 Census Households	2,822	18,257	50,112
2010 Census Households	2,389	16,670	44,022
Projected Annual Growth 2023 to 2028	0.5%	0.7%	0.6%
Historical Annual Growth 2010 to 2023	1.5%	0.8%	1.2%
<b>Race and Ethnicity</b>			
2023 Estimated White	71.8%	77.0%	75.2%
2023 Estimated Black or African American	12.0%	8.8%	8.4%
2023 Estimated Asian or Pacific Islander	7.7%	8.5%	10.4%
2023 Estimated American Indian or Native Alaskan	0.4%	0.1%	0.2%
2023 Estimated Other Races	8.1%	5.6%	5.8%
2023 Estimated Hispanic	7.4%	4.0%	4.4%
<b>Income</b>			
2023 Estimated Average Household Income	\$156,384	\$174,199	\$167,113
2023 Estimated Median Household Income	\$106,888	\$130,596	\$130,455
2023 Estimated Per Capita Income	\$52,863	\$60,908	\$58,424
<b>Education (Age 25+)</b>			
2023 Estimated Elementary (Grade Level 0 to 8)	2.8%	1.9%	2.0%
2023 Estimated Some High School (Grade Level 9 to 11)	3.3%	2.0%	2.4%
2023 Estimated High School Graduate	18.5%	16.7%	18.0%
2023 Estimated Some College	18.9%	16.8%	15.6%
2023 Estimated Associates Degree Only	8.8%	6.3%	6.9%
2023 Estimated Bachelors Degree Only	32.3%	35.6%	33.5%
2023 Estimated Graduate Degree	15.5%	20.7%	21.5%
<b>Business</b>			
2023 Estimated Total Businesses	173	1,661	4,611
2023 Estimated Total Employees	1,209	17,677	54,238
2023 Estimated Employee Population per Business	7.0	10.6	11.8
2023 Estimated Residential Population per Business	48.8	31.9	31.7

©2023, Sites USA, Chandler, Arizona, 480-491-1112 Demographic Source: Applied Geographic Solutions 4/2023, TIGER Geography - RS1



## LIBERTY TWP. LAND

6784 Hamilton Mason Road, Liberty Twp., OH



Contact:  
**Zachary Schunn**

513.489.3343 x5  
zschunn@edgegp.com

128 East Second Street  
Suite B  
Covington, KY 41011  
513.489.3343  
edgegp.com

LET US GIVE YOU AN EDGE



128 East Second Street | Suite B | Covington, KY 41011 | 513.489.3343 | edgegp.com

Information and any imagery is proprietary to Edge Real Estate Group and confidential. Information contained herein has been obtained from sources deemed reliable, but is not guaranteed and is subject to change.