

## PRINCETON ROAD at SR 747 (NEC)

5040 Princeton Road, Liberty Twp., OH 45011

1.47 Acres FOR LEASE  
or BUILD-TO-SUIT



### Property Details:

- Located in Liberty Township, at the high-traffic intersection of State Route 747 (Liberty Fairfield Road) and Princeton Road
- Directly off State Route 129 (Butler County Veterans Hwy)
- Liberty Township is a high-income suburb of Cincinnati OH, with the fastest residential growth in the region

### Surrounding retailers include:



### Demographics:

2023 Estimates	1 Mile	3 Mile	5 Mile
Population	5,672	55,250	114,021
Households	1,758	18,844	40,434
Average Household Income	\$180,226	\$177,693	\$155,417
Total Number of Employees	1,101	10,226	49,019

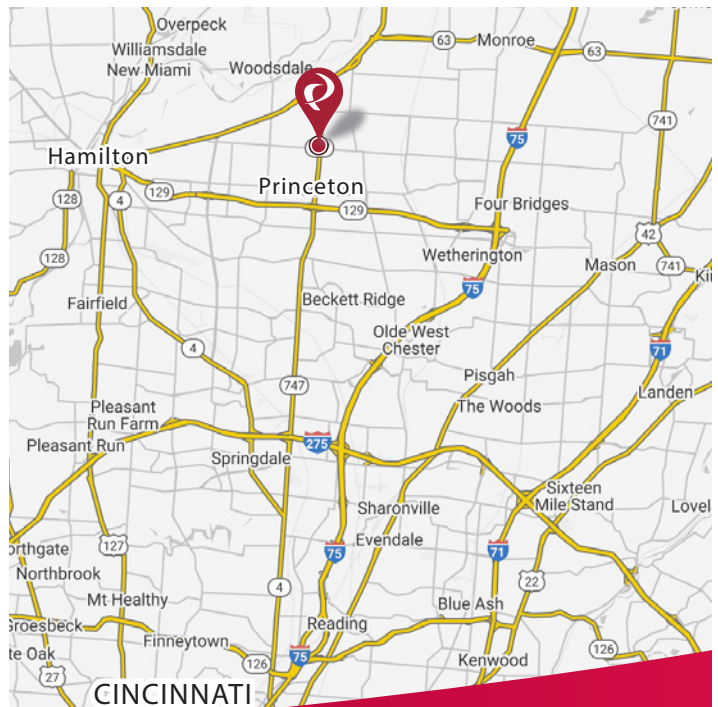
### Traffic Counts:

SR 747 (Princeton Glendale Road)	34,844 ADT (Inrix 2022)
Princeton Road	12,691 ADT (Inrix 2022)

### Contact:

**Zachary Schunn**

513.489.3343 x5  
zschunn@edgegp.com



LET US GIVE YOU AN EDGE



128 East Second Street | Suite B | Covington, KY 41011 | 513.489.3343 | edgegp.com

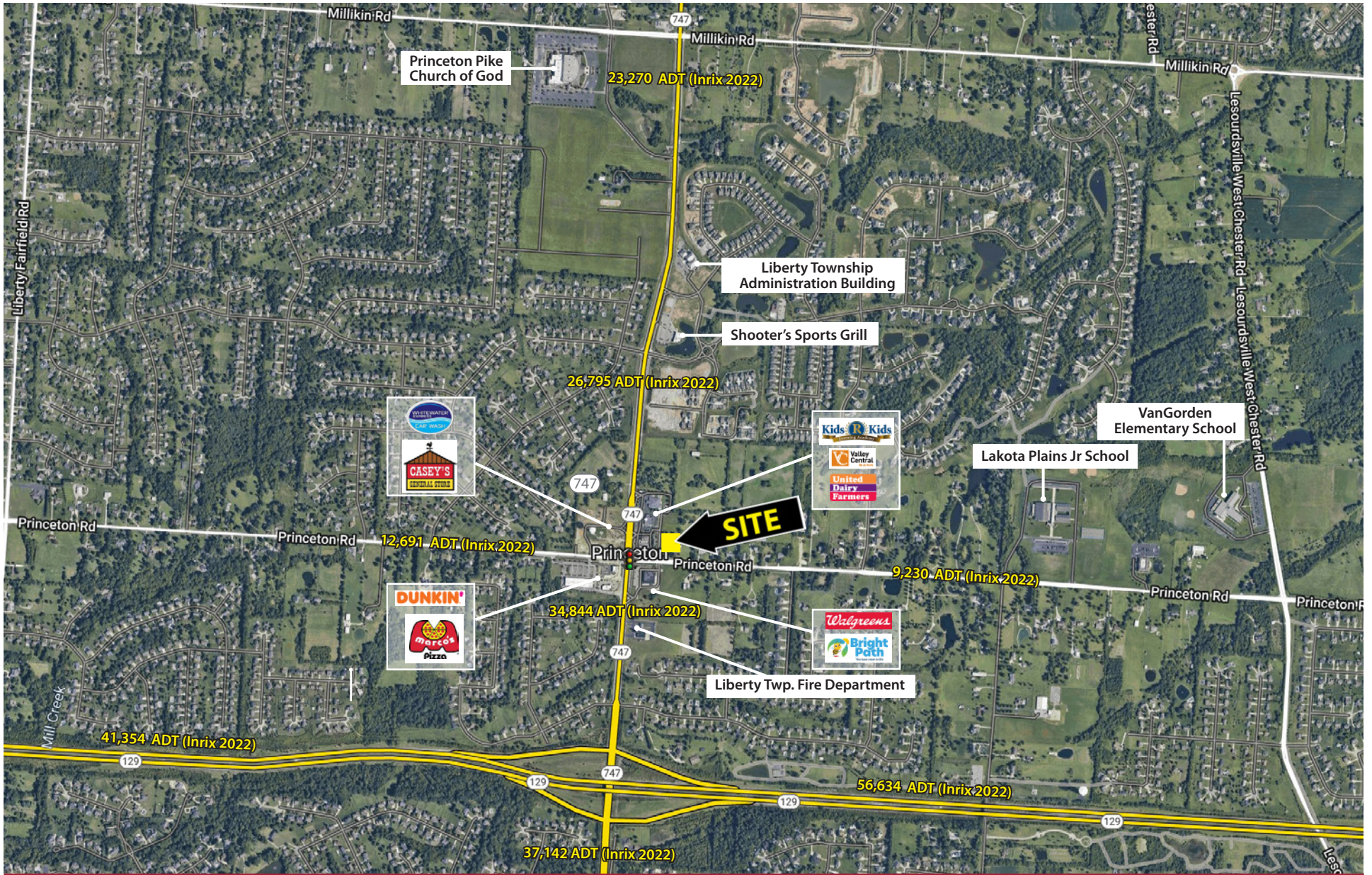
Information and any imagery is proprietary to Edge Real Estate Group and confidential. Information contained herein has been obtained from sources deemed reliable, but is not guaranteed and is subject to change.



# PRINCETON ROAD at SR 747 (NEC)

5040 Princeton Road, Liberty Twp., OH 45011

Overview Aerial



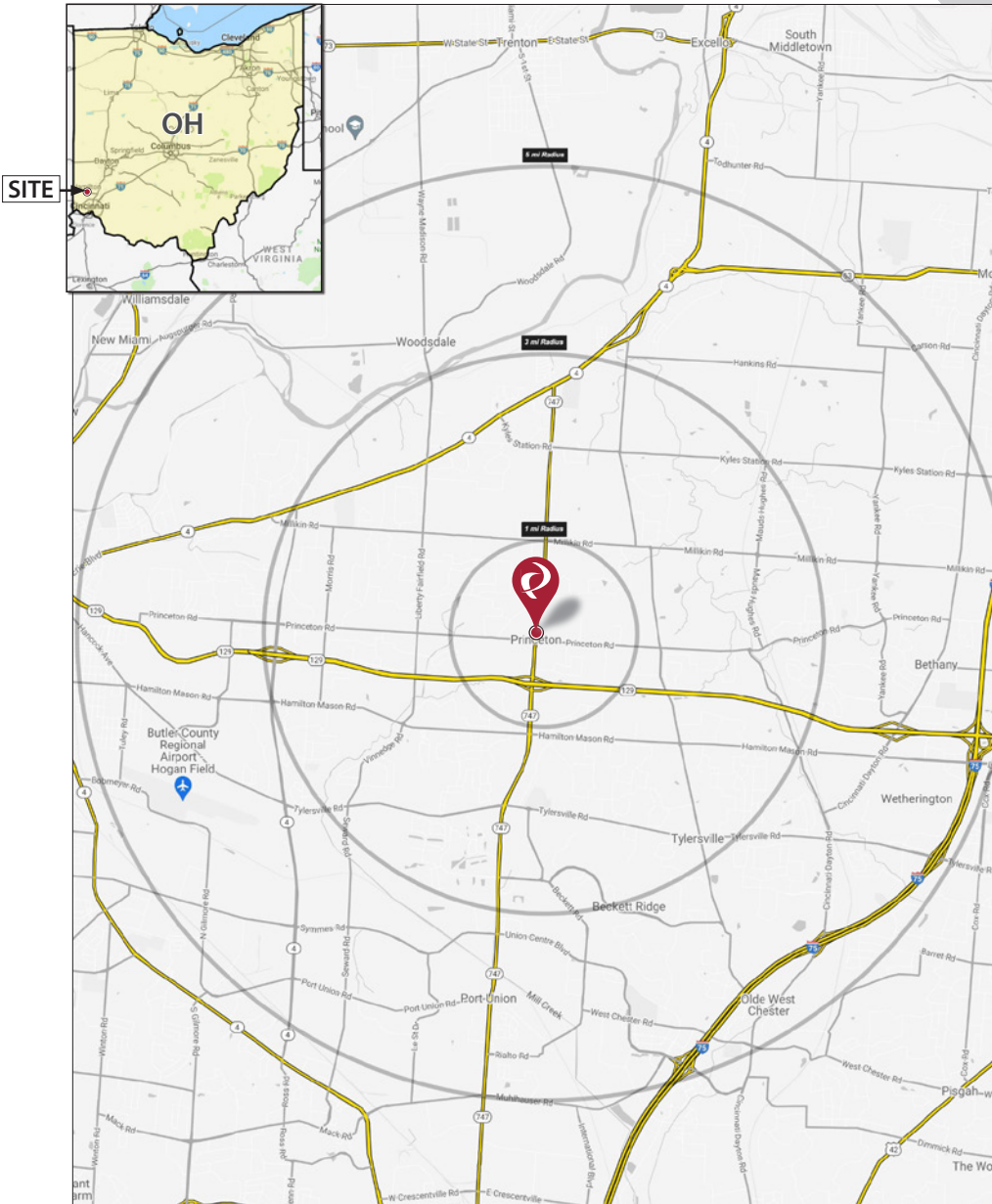
128 East Second Street | Suite B | Covington, KY 41011 | 513.489.3343 | edgegp.com

Information and any imagery is proprietary to Edge Real Estate Group and confidential. Information contained herein has been obtained from sources deemed reliable, but is not guaranteed and is subject to change.

# PRINCETON ROAD at SR 747 (NEC)

5040 Princeton Road, Liberty Twp., OH 45011

## Market Map and Demographics



### Summary Profile

2010-2020 Census, 2023 Estimates with 2028 Projections  
 Calculated using Weighted Block Centroid from Block Groups



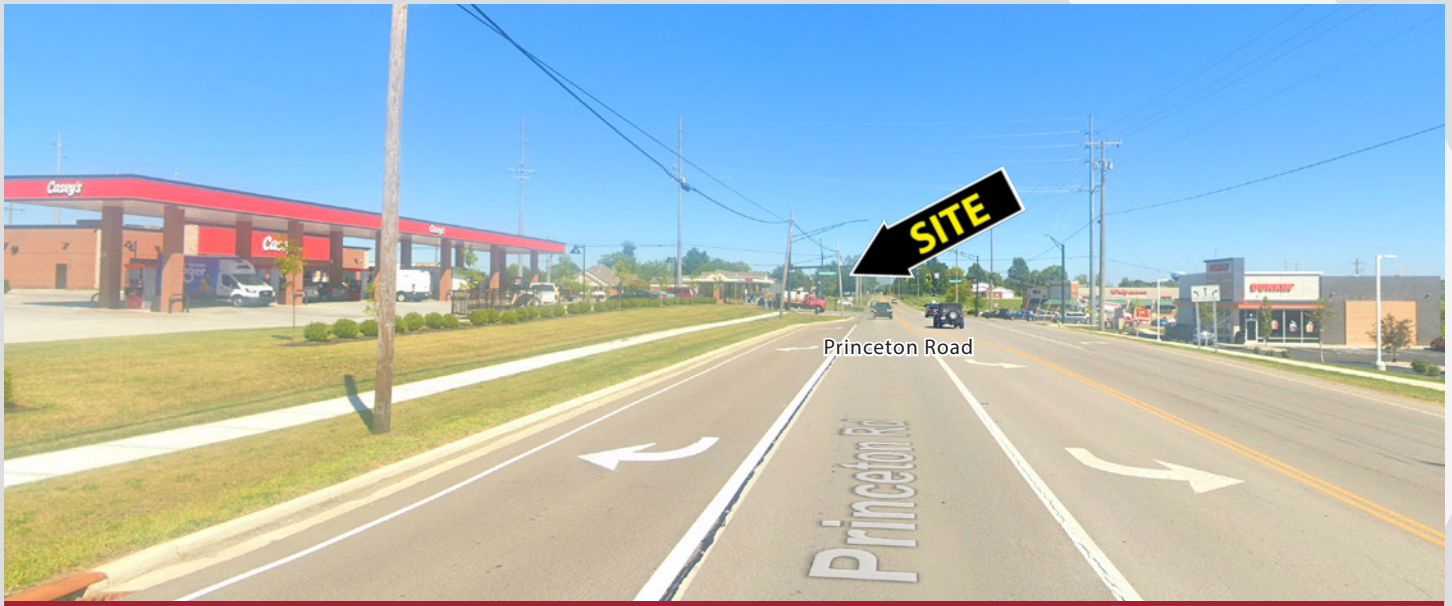
Lat/Lon: 39.3893/-84.4522

5020 Princeton Rd., Liberty Twp., OH 45011	1 mi radius	3 mi radius	5 mi radius
<b>Population</b>			
2023 Estimated Population	5,672	55,250	114,021
2028 Projected Population	5,727	56,151	116,161
2020 Census Population	5,857	56,550	115,685
2010 Census Population	4,783	51,161	103,781
Projected Annual Growth 2023 to 2028	0.2%	0.3%	0.4%
Historical Annual Growth 2010 to 2023	1.4%	0.6%	0.8%
2023 Median Age	39.4	37.8	37.0
<b>Households</b>			
2023 Estimated Households	1,758	18,844	40,434
2028 Projected Households	1,768	19,077	41,024
2020 Census Households	1,797	19,009	40,327
2010 Census Households	1,409	16,760	35,570
Projected Annual Growth 2023 to 2028	0.1%	0.2%	0.3%
Historical Annual Growth 2010 to 2023	1.9%	1.0%	1.1%
<b>Race and Ethnicity</b>			
2023 Estimated White	79.9%	74.8%	73.4%
2023 Estimated Black or African American	7.8%	10.4%	11.5%
2023 Estimated Asian or Pacific Islander	7.7%	9.1%	7.9%
2023 Estimated American Indian or Native Alaskan	-	0.2%	0.3%
2023 Estimated Other Races	4.5%	5.5%	6.9%
2023 Estimated Hispanic	3.1%	4.4%	6.2%
<b>Income</b>			
2023 Estimated Average Household Income	\$180,226	\$177,693	\$155,417
2023 Estimated Median Household Income	\$152,729	\$130,894	\$115,552
2023 Estimated Per Capita Income	\$55,858	\$60,638	\$55,177
<b>Education (Age 25+)</b>			
2023 Estimated Elementary (Grade Level 0 to 8)	1.2%	2.2%	2.4%
2023 Estimated Some High School (Grade Level 9 to 11)	1.8%	2.3%	3.6%
2023 Estimated High School Graduate	20.4%	21.9%	24.6%
2023 Estimated Some College	13.4%	16.2%	17.1%
2023 Estimated Associates Degree Only	9.2%	8.1%	8.1%
2023 Estimated Bachelors Degree Only	31.4%	30.1%	28.2%
2023 Estimated Graduate Degree	22.5%	19.2%	16.0%
<b>Business</b>			
2023 Estimated Total Businesses	99	1,207	3,873
2023 Estimated Total Employees	1,101	10,226	49,019
2023 Estimated Employee Population per Business	11.2	8.5	12.7
2023 Estimated Residential Population per Business	57.5	45.8	29.4

©2024, Sites USA, Chandler, Arizona, 480-491-1112 Demographic Source: Applied Geographic Solutions 11/2023, TIGER Geography - RS1



**PRINCETON ROAD at SR 747 (NEC)**  
5040 Princeton Road, Liberty Twp., OH 45011



**Contact:**  
**Zachary Schunn**

513.489.3343 x5  
zschunn@edgegp.com

128 East Second Street  
Suite B  
Covington, KY 41011  
513.489.3343  
edgegp.com

**LET US GIVE YOU AN EDGE**



128 East Second Street | Suite B | Covington, KY 41011 | 513.489.3343 | edgegp.com

Information and any imagery is proprietary to Edge Real Estate Group and confidential. Information contained herein has been obtained from sources deemed reliable, but is not guaranteed and is subject to change.