

## FINDLAY, OH LAND ALONG I-75

1305 W. Main Cross Street, Findlay, OH 45840

10.46 Acres, Available FOR SALE



### Property Details:

- Rare, large, Interstate-adjacent land site
- Great location for retail, restaurant, fuel or hotel operators
- Findlay is the largest city and county seat of Hancock County, which has a population of roughly 75,000 people

### Demographics:

2024 Estimates	1 Mile	3 Mile	5 Mile	10 Mile
Population	5,274	39,821	50,845	66,211
Households	2,353	17,124	22,022	27,999
Average HH Income	\$78,068	\$87,355	\$96,135	\$97,545
Total # of Employees	3,359	16,953	27,498	32,572

### Traffic Counts:

Inrix 2023	ADT
W Main Cross Street	15,174
I-75	26,208

### Contact: Zachary Schunn

513.489.3343 x5  
zschunn@edgegp.com



LET US GIVE YOU AN EDGE



128 East Second Street | Suite B | Covington, KY 41011 | 513.489.3343 | edgegp.com

Information and any imagery is proprietary to Edge Real Estate Group and confidential. Information contained herein has been obtained from sources deemed reliable, but is not guaranteed and is subject to change.



## FINDLAY, OH LAND ALONG I-75

1305 W. Main Cross Street, Findlay, OH 45840



Overview Aerial



128 East Second Street | Suite B | Covington, KY 41011 | 513.489.3343 | edgegp.com

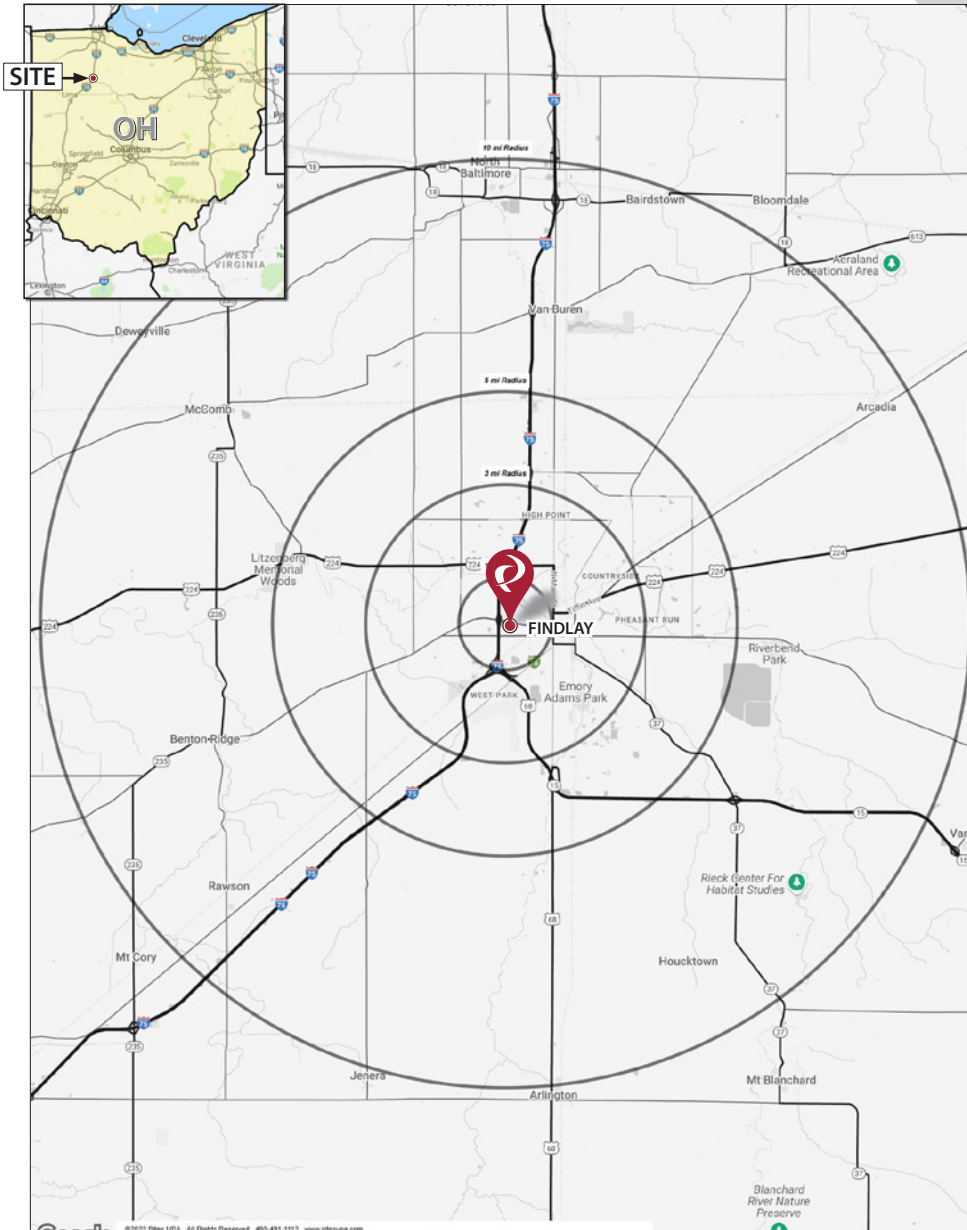
Information and any imagery is proprietary to Edge Real Estate Group and confidential. Information contained herein has been obtained from sources deemed reliable, but is not guaranteed and is subject to change.



## FINDLAY, OH LAND ALONG I-75

1305 W. Main Cross Street, Findlay, OH 45840

## Market Map and Demographics



### Summary Profile

2010-2020 Census, 2024 Estimates with 2029 Projections  
Calculated using Weighted Block Centroid from Block Groups



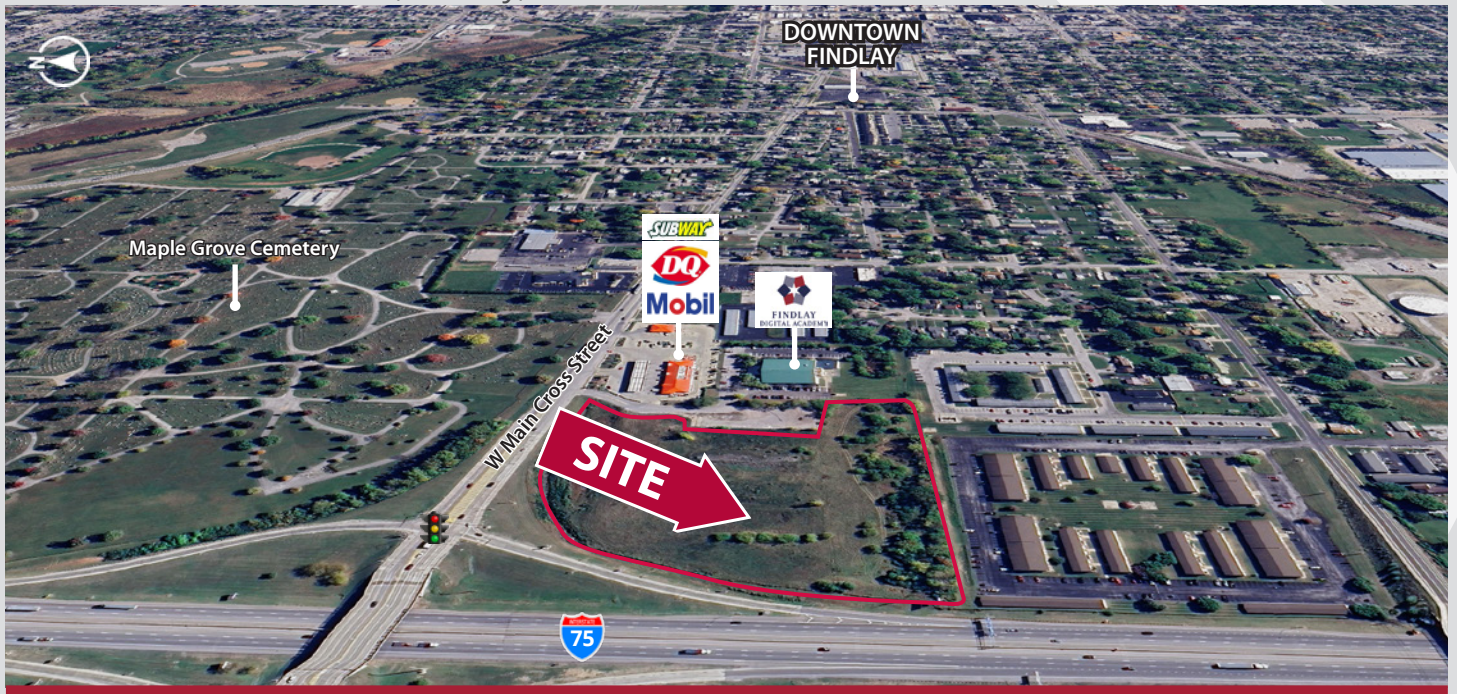
Lat/Lon: 41.0407/-83.6702

1305 W Main Cross St Findlay, OH 45840	1 mi radius	3 mi radius	5 mi radius	10 mi radius
<b>Population</b>				
2024 Estimated Population	5,274	39,821	50,845	66,211
2029 Projected Population	5,167	38,760	49,682	65,024
2020 Census Population	5,428	39,707	50,308	65,889
2010 Census Population	5,488	40,356	50,543	65,838
Projected Annual Growth 2024 to 2029	-0.4%	-0.5%	-0.5%	-0.4%
Historical Annual Growth 2010 to 2024	-0.3%	-	-	-
2024 Median Age	33.4	36.1	38.3	39.1
<b>Households</b>				
2024 Estimated Households	2,353	17,124	22,022	27,999
2029 Projected Households	2,301	16,564	21,396	27,408
2020 Census Households	2,296	16,793	21,524	27,473
2010 Census Households	2,179	16,456	20,898	26,595
Projected Annual Growth 2024 to 2029	-0.4%	-0.7%	-0.6%	-0.4%
Historical Annual Growth 2010 to 2024	0.6%	0.3%	0.4%	0.4%
<b>Race and Ethnicity</b>				
2024 Estimated White	87.9%	87.5%	88.1%	89.4%
2024 Estimated Black or African American	3.0%	3.2%	3.0%	2.5%
2024 Estimated Asian or Pacific Islander	2.6%	2.5%	2.7%	2.3%
2024 Estimated American Indian or Native Alaskan	0.2%	0.2%	0.2%	0.2%
2024 Estimated Other Races	6.4%	6.6%	6.1%	5.6%
2024 Estimated Hispanic	7.5%	7.2%	6.6%	6.2%
<b>Income</b>				
2024 Estimated Average Household Income	\$78,068	\$87,355	\$96,135	\$97,545
2024 Estimated Median Household Income	\$56,943	\$67,511	\$74,332	\$75,689
2024 Estimated Per Capita Income	\$35,217	\$37,843	\$41,892	\$41,471
<b>Education (Age 25+)</b>				
2024 Estimated Elementary (Grade Level 0 to 8)	0.5%	1.4%	1.3%	1.3%
2024 Estimated Some High School (Grade Level 9 to 11)	6.8%	5.6%	5.2%	5.0%
2024 Estimated High School Graduate	33.4%	34.7%	33.2%	34.5%
2024 Estimated Some College	24.3%	20.5%	19.9%	20.0%
2024 Estimated Associates Degree Only	8.4%	8.8%	8.7%	9.1%
2024 Estimated Bachelors Degree Only	20.6%	18.5%	19.8%	18.7%
2024 Estimated Graduate Degree	6.0%	10.5%	12.0%	11.4%
<b>Business</b>				
2024 Estimated Total Businesses	265	1,459	1,978	2,232
2024 Estimated Total Employees	3,359	16,953	27,498	32,572
2024 Estimated Employee Population per Business	12.7	11.6	13.9	14.6
2024 Estimated Residential Population per Business	19.9	27.3	25.7	29.7

©2025, Sites USA, Chandler, Arizona, 480-491-1112 Demographic Source: Applied Geographic Solutions 11/2024, TIGER Geography - RS1

## FINDLAY, OH LAND ALONG I-75

1305 W. Main Cross Street, Findlay, OH 45840



Aerial looking East



Contact:  
**Zachary Schunn**

513.489.3343 x5  
zschunn@edgegp.com

128 East Second Street  
Suite B  
Covington, KY 41011  
513.489.3343  
edgegp.com

LET US GIVE YOU AN EDGE



128 East Second Street | Suite B | Covington, KY 41011 | 513.489.3343 | edgegp.com

Information and any imagery is proprietary to Edge Real Estate Group and confidential. Information contained herein has been obtained from sources deemed reliable, but is not guaranteed and is subject to change.